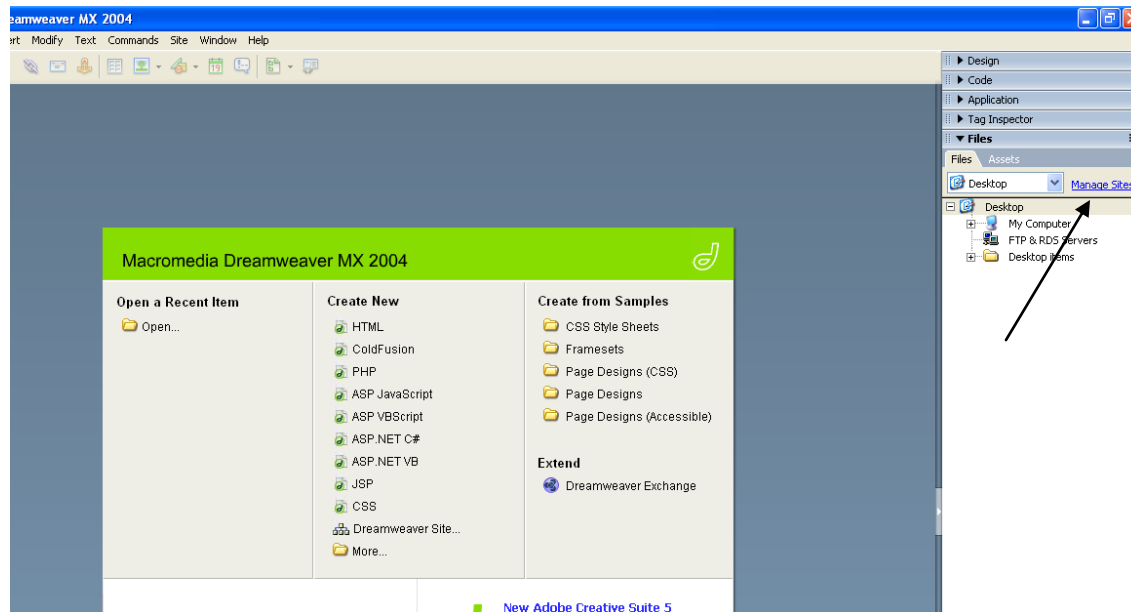
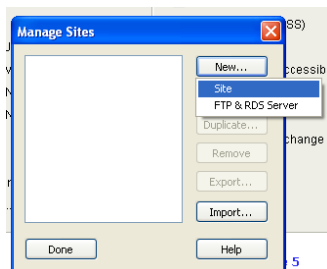


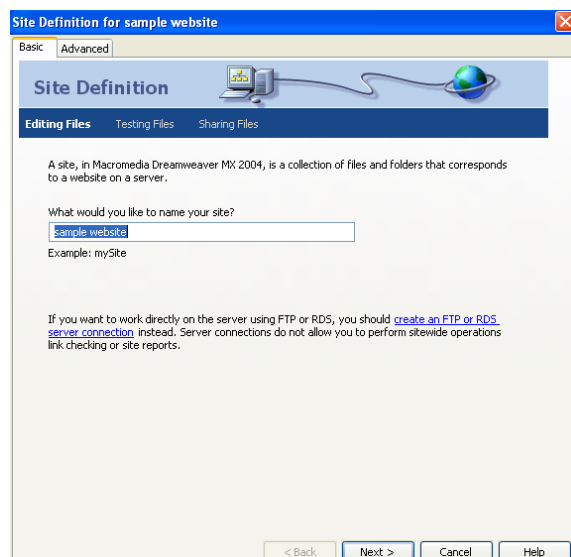
# Setting up Managed sites in Dreamweaver



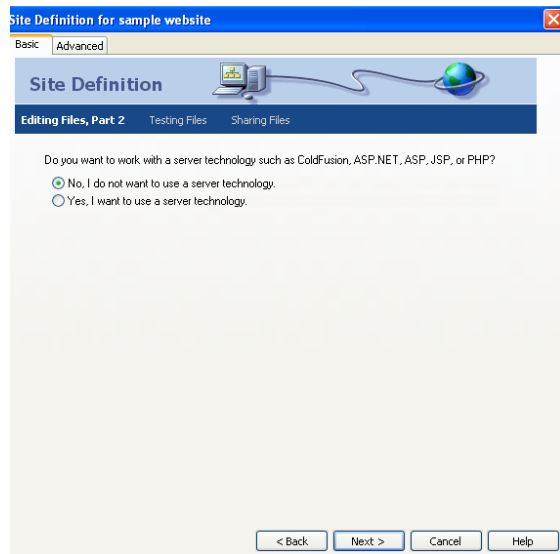
1. In Dreamweaver choose **Managed Sites** from the left side of the screen



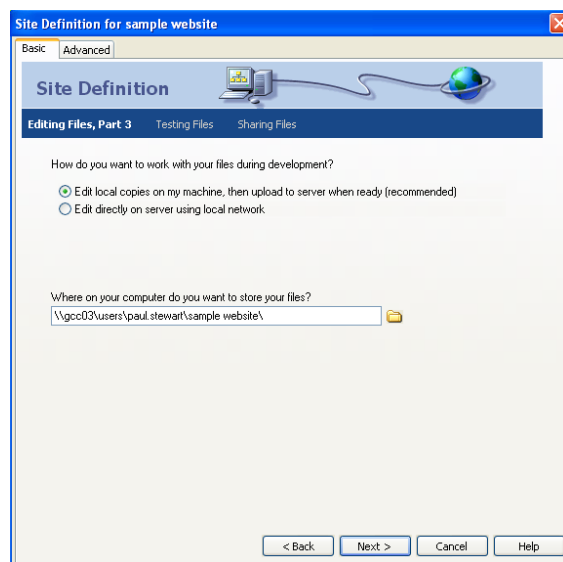
2. Choose **New** and **Site**



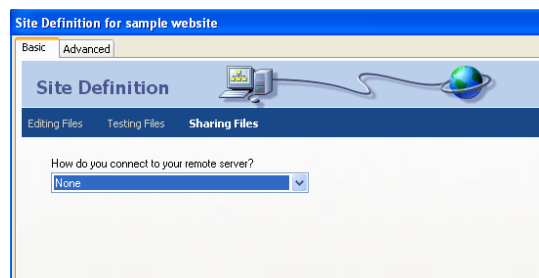
3. Create a folder name for your website e.g. **Sample Web**



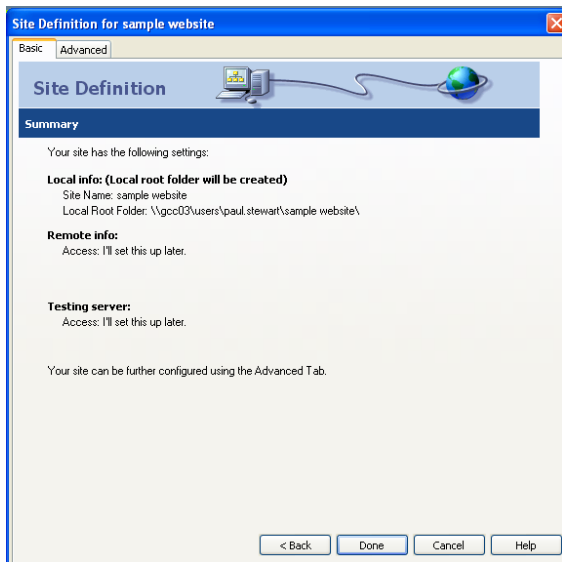
4. Choose **No**, to server technology



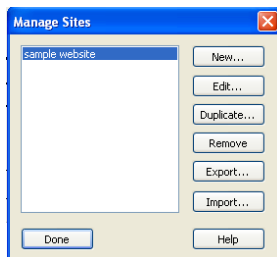
5. Choose **Edit local**, automatically your name and web folder should fill in



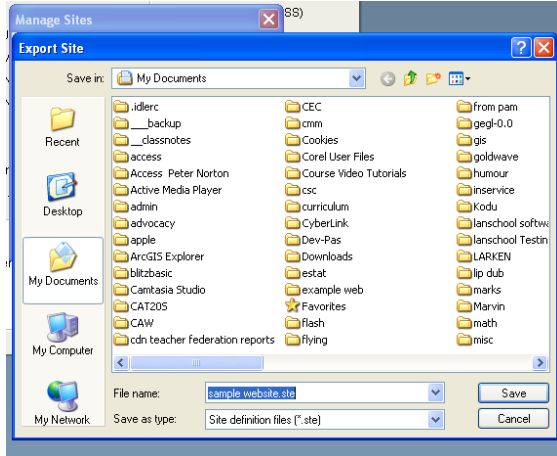
6. Choose **None** for local server



7. Click the **Done** button

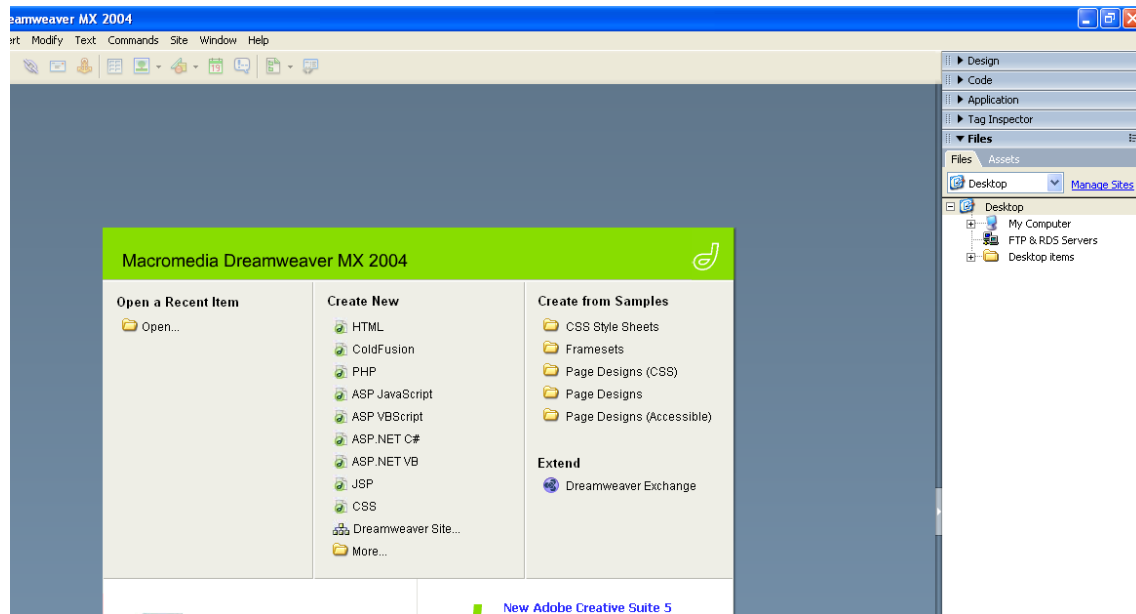


8. Click the **EXPORT** button

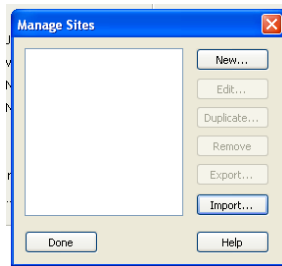


9. Click **Save** button

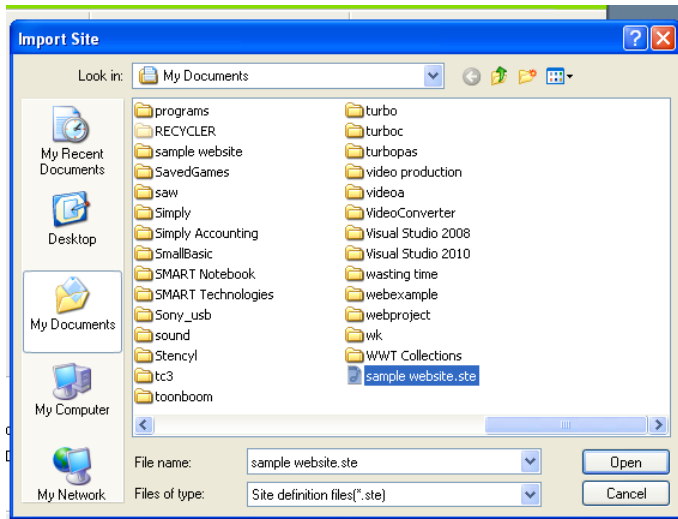
# To Import a previously Saved managed Site



1. In Dreamweaver choose **Managed Sites** from the left side of the screen



2. Click the **Import** button



3. Find your site filename and click open eg. **Sample website.ste**